

Discharge Measurement Summary

Site name WCanal6
Site number 002
Operator(s) VAllen
File name WestCanal_20230601_1311.ft
Comment

Start time	6/1/2023 1:11 PM	Sensor type	Top Setting
End time	6/1/2023 2:33 PM	Handheld serial number	FT2H2219029
Start location latitude	42.809	Probe serial number	FT2P2219014
Start location longitude	-118.871	Probe firmware	1.30
Calculations engine	FlowTracker2	Handheld software	1.7

# Stations	Avg interval (s)	Total discharge (m³/s)
29	40	0.7765

Total width (m)	Total area (m²)	Wetted Perimeter (m)
5.212	3.18160	5.705

Mean SNR (dB)	Mean depth (m)	Mean velocity (m/s)
45	0.610	0.2441

Mean temp (°C)	Max depth (m)	Max velocity (m/s)
10.515	0.829	0.3533

Discharge Uncertainty		
Category	ISO	IVE
Accuracy	1.0%	1.0%
Depth	0.1%	0.9%
Velocity	0.2%	2.8%
Width	0.1%	0.1%
Method	0.8%	
# Stations	1.8%	
Overall	2.2%	3.1%

Discharge equation	Mid Section
Discharge uncertainty	IVE
Discharge reference	Rated

Data Collection Settings	
Salinity	0.000 PSS-78
Temperature	-
Sound speed	-
Mounting correction	0.000 %

Summary overview

No changes were made to this file
Quality control warnings



Discharge Measurement Summary

Site name WCanal6
Site number 002
Operator(s) VAllen
File name WestCanal_20230601_1311.ft
Comment

Station Warning Settings

Station discharge OK

Station discharge < 5.00%

Station discharge caution

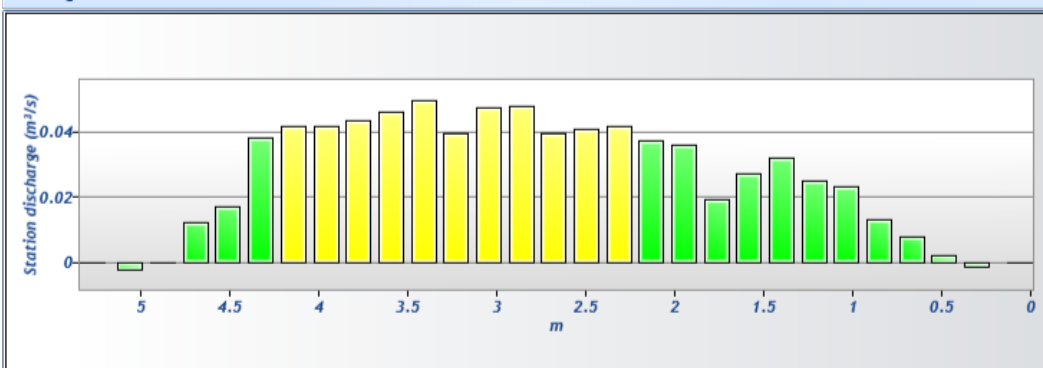
5.00% >= Station discharge < 10.00%

Station discharge warning

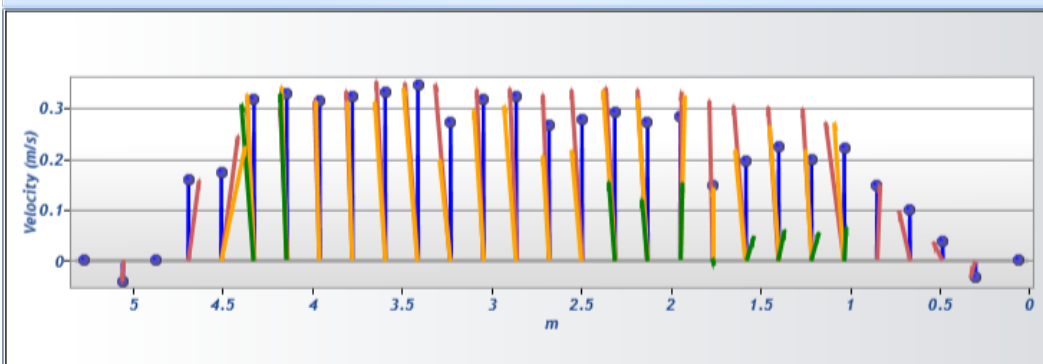
Station discharge >= 10.00%



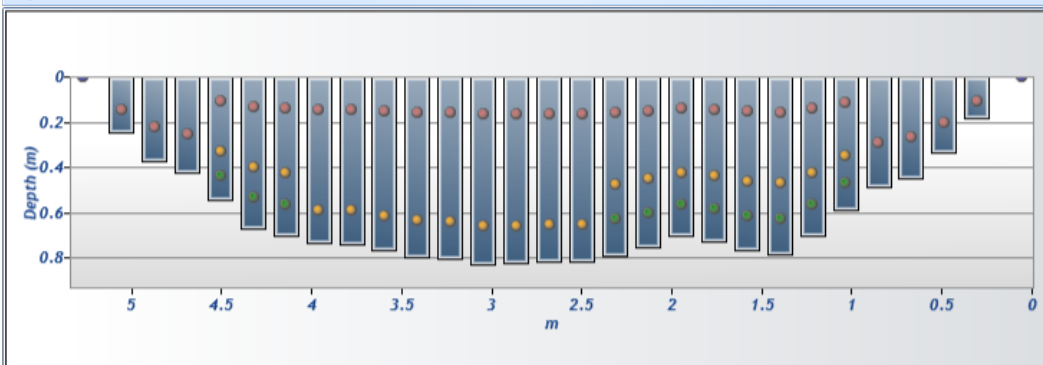
Discharge chart

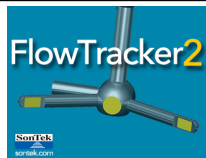


Velocity chart



Depth chart

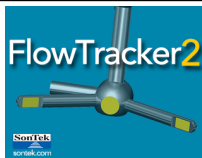




Discharge Measurement Summary

Site name WCanal6
Site number 002
Operator(s) VAllen
File name WestCanal_20230601_1311.ft
Comment

Measurement results															
St#	Time	Location (m)	Method	Depth (m)	%Depth	Measured Depth (m)	Samples	Velocity (m/s)	Correction	Mean Velocity (m/s)	Area (m ²)	Flow (m ³ /s)	%Q		
0	1:11 PM	0.061	None	0.000	0.0000	0.000	0	0.0000	1.0000	-0.0333	0.00000	0.0000	0.00	✓	
1	1:13 PM	0.305	0.6	0.183	0.6000	0.110	80	-0.0333	1.0000	-0.0333	0.03902	-0.0013	-0.17	✓	
2	1:15 PM	0.488	0.6	0.335	0.6000	0.201	80	0.0372	1.0000	0.0372	0.06132	0.0023	0.29	✓	
3	1:17 PM	0.671	0.6	0.445	0.6000	0.267	80	0.1004	1.0000	0.1004	0.08138	0.0082	1.05	✓	
4	1:19 PM	0.853	0.6	0.485	0.6000	0.291	80	0.1489	1.0000	0.1489	0.08863	0.0132	1.70	✓	
5	1:21 PM	1.036	0.2/0.6/0.8	0.585	0.2000	0.117	80	0.2723	1.0000	0.2208	0.10702	0.0236	3.04	✓	
5	1:21 PM	1.036	0.2/0.6/0.8	0.585	0.6000	0.351	80	0.2716	1.0000	0.2208	0.10702	0.0236	3.04	✓	
5	1:21 PM	1.036	0.2/0.6/0.8	0.585	0.8000	0.468	80	0.0675	1.0000	0.2208	0.10702	0.0236	3.04	✓	
6	1:25 PM	1.219	0.2/0.6/0.8	0.704	0.2000	0.141	80	0.3003	1.0000	0.1981	0.12876	0.0255	3.29	✓	
6	1:25 PM	1.219	0.2/0.6/0.8	0.704	0.6000	0.422	80	0.2180	1.0000	0.1981	0.12876	0.0255	3.29	✓	
6	1:25 PM	1.219	0.2/0.6/0.8	0.704	0.8000	0.563	80	0.0562	1.0000	0.1981	0.12876	0.0255	3.29	✓	
7	1:29 PM	1.402	0.2/0.6/0.8	0.786	0.2000	0.157	80	0.3031	1.0000	0.2236	0.14381	0.0322	4.14	✓	
7	1:29 PM	1.402	0.2/0.6/0.8	0.786	0.6000	0.472	80	0.2649	1.0000	0.2236	0.14381	0.0322	4.14	✓	
7	1:29 PM	1.402	0.2/0.6/0.8	0.786	0.8000	0.629	80	0.0615	1.0000	0.2236	0.14381	0.0322	4.14	✓	
8	1:33 PM	1.585	0.2/0.6/0.8	0.768	0.2000	0.154	80	0.3048	1.0000	0.1974	0.14047	0.0277	3.57	✓	
8	1:33 PM	1.585	0.2/0.6/0.8	0.768	0.6000	0.461	80	0.2178	1.0000	0.1974	0.14047	0.0277	3.57	✓	
8	1:33 PM	1.585	0.2/0.6/0.8	0.768	0.8000	0.614	80	0.0490	1.0000	0.1974	0.14047	0.0277	3.57	✓	
9	1:37 PM	1.768	0.2/0.6/0.8	0.728	0.2000	0.146	80	0.3152	1.0000	0.1474	0.13322	0.0196	2.53	✓	
9	1:37 PM	1.768	0.2/0.6/0.8	0.728	0.6000	0.437	80	0.1428	1.0000	0.1474	0.13322	0.0196	2.53	✓	
9	1:37 PM	1.768	0.2/0.6/0.8	0.728	0.8000	0.583	80	-0.0110	1.0000	0.1474	0.13322	0.0196	2.53	✓	
10	1:40 PM	1.951	0.2/0.6/0.8	0.704	0.2000	0.141	80	0.3329	1.0000	0.2837	0.12876	0.0365	4.70	✓	
10	1:40 PM	1.951	0.2/0.6/0.8	0.704	0.6000	0.422	80	0.3249	1.0000	0.2837	0.12876	0.0365	4.70	✓	
10	1:40 PM	1.951	0.2/0.6/0.8	0.704	0.8000	0.563	80	0.1522	1.0000	0.2837	0.12876	0.0365	4.70	✓	
11	1:44 PM	2.134	0.2/0.6/0.8	0.753	0.2000	0.151	80	0.3368	1.0000	0.2734	0.13768	0.0376	4.85	✓	
11	1:44 PM	2.134	0.2/0.6/0.8	0.753	0.6000	0.452	80	0.3179	1.0000	0.2734	0.13768	0.0376	4.85	✓	
11	1:44 PM	2.134	0.2/0.6/0.8	0.753	0.8000	0.602	80	0.1212	1.0000	0.2734	0.13768	0.0376	4.85	✓	
12	1:48 PM	2.316	0.2/0.6/0.8	0.789	0.2000	0.158	80	0.3406	1.0000	0.2918	0.14437	0.0421	5.42	✓	
12	1:48 PM	2.316	0.2/0.6/0.8	0.789	0.6000	0.474	80	0.3353	1.0000	0.2918	0.14437	0.0421	5.42	✓	
12	1:48 PM	2.316	0.2/0.6/0.8	0.789	0.8000	0.632	80	0.1559	1.0000	0.2918	0.14437	0.0421	5.42	✓	
13	1:51 PM	2.499	0.2/0.8	0.817	0.2000	0.163	80	0.3365	1.0000	0.2771	0.14939	0.0414	5.33	✓	
13	1:51 PM	2.499	0.2/0.8	0.817	0.8000	0.653	80	0.2177	1.0000	0.2771	0.14939	0.0414	5.33	✓	
14	1:54 PM	2.682	0.2/0.8	0.817	0.2000	0.163	80	0.3269	1.0000	0.2666	0.14939	0.0398	5.13	✓	
14	1:54 PM	2.682	0.2/0.8	0.817	0.8000	0.653	80	0.2063	1.0000	0.2666	0.14939	0.0398	5.13	✓	
15	1:56 PM	2.865	0.2/0.8	0.823	0.2000	0.165	80	0.3390	1.0000	0.3220	0.15050	0.0485	6.24	✓	
15	1:56 PM	2.865	0.2/0.8	0.823	0.8000	0.658	80	0.3050	1.0000	0.3220	0.15050	0.0485	6.24	✓	
16	1:59 PM	3.048	0.2/0.8	0.829	0.2000	0.166	80	0.3368	1.0000	0.3165	0.15162	0.0480	6.18	✓	
16	1:59 PM	3.048	0.2/0.8	0.829	0.8000	0.663	80	0.2962	1.0000	0.3165	0.15162	0.0480	6.18	✓	
17	2:03 PM	3.231	0.2/0.8	0.802	0.2000	0.160	80	0.3473	1.0000	0.2733	0.14660	0.0401	5.16	✓	
17	2:03 PM	3.231	0.2/0.8	0.802	0.8000	0.641	80	0.1993	1.0000	0.2733	0.14660	0.0401	5.16	✓	
18	2:05 PM	3.414	0.2/0.8	0.796	0.2000	0.159	80	0.3500	1.0000	0.3451	0.14549	0.0502	6.47	✓	
18	2:05 PM	3.414	0.2/0.8	0.796	0.8000	0.636	80	0.3403	1.0000	0.3451	0.14549	0.0502	6.47	✓	
19	2:07 PM	3.597	0.2/0.8	0.768	0.2000	0.154	80	0.3533	1.0000	0.3329	0.14047	0.0468	6.02	✓	
19	2:07 PM	3.597	0.2/0.8	0.768	0.8000	0.614	80	0.3126	1.0000	0.3329	0.14047	0.0468	6.02	✓	
20	2:10 PM	3.780	0.2/0.8	0.738	0.2000	0.148	80	0.3343	1.0000	0.3238	0.13490	0.0437	5.62	✓	
20	2:10 PM	3.780	0.2/0.8	0.738	0.8000	0.590	80	0.3132	1.0000	0.3238	0.13490	0.0437	5.62	✓	
21	2:13 PM	3.962	0.2/0.8	0.735	0.2000	0.147	80	0.3143	1.0000	0.3142	0.13434	0.0422	5.43	✓	
21	2:13 PM	3.962	0.2/0.8	0.735	0.8000	0.588	80	0.3140	1.0000	0.3142	0.13434	0.0422	5.43	✓	
22	2:16 PM	4.145	0.2/0.6/0.8	0.704	0.2000	0.141	80	0.3005	1.0000	0.3285	0.12876	0.0423	5.45	✓	
22	2:16 PM	4.145	0.2/0.6/0.8	0.704	0.6000	0.422	80	0.3424	1.0000	0.3285	0.12876	0.0423	5.45	✓	
22	2:16 PM	4.145	0.2/0.6/0.8	0.704	0.8000	0.563	80	0.3288	1.0000	0.3285	0.12876	0.0423	5.45	✓	
23	2:19 PM	4.328	0.2/0.6/0.8	0.668	0.2000	0.134	80	0.3033	1.0000	0.3167	0.12207	0.0387	4.98	✓	
23	2:19 PM	4.328	0.2/0.6/0.8	0.668	0.6000	0.401	80	0.3278	1.0000	0.3167	0.12207	0.0387	4.98	✓	
23	2:19 PM	4.328	0.2/0.6/0.8	0.668	0.8000	0.534	80	0.3079	1.0000	0.3167	0.12207	0.0387	4.98	✓	
24	2:24 PM	4.511	0.2/0.6/0.8	0.546	0.2000	0.109	80	0.2452	1.0000	0.1739	0.09978	0.0173	2.23	✓	
24	2:24 PM	4.511	0.2/0.6/0.8	0.546	0.6000	0.327	80	0.2252	1.0000	0.1739	0.09978	0.0173	2.23	✓	
24	2:24 PM	4.511	0.2/0.6/0.8	0.546	0.8000	0.436	80	-0.0001	1.0000	0.1739	0.09978	0.0173	2.23	✓	
25	2:28 PM	4.694	0.6	0.424	0.6000	0.254	80	0.1594	1.0000	0.1594	0.07748	0.0124	1.59	✓	
26	2:30 PM	4.877	0.6	0.369	0.6000	0.221	80	0.0000	1.0000	0.0000	0.06745	0.0000	0.00	✓	
27	2:31 PM	5.060	0.6	0.247	0.6000	0.148	80	-0.0418	1.0000	-0.0418	0.04891	-0.0020	-0.26	✓	
28	2:33 PM	5.273	None	0.000	0.0000	0.000	0	0.0000		-0.0418	0.00000	0.0000	0.00	✓	



Discharge Measurement Summary

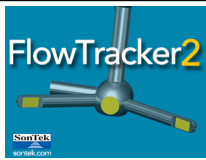
Site name WCanal6
Site number 002
Operator(s) VAllen
File name WestCanal_20230601_1311.ft
Comment

Quality Control Settings

Maximum depth change 50.00%
Maximum spacing change 100.00%
SNR threshold 10 dB
Standard error threshold 0.0100 m/s
Spike threshold 10.00%
Maximum velocity angle 20.0 deg
Maximum tilt angle 5.0 deg

Quality control warnings

St#	Time	Location (m)	Method	Depth (m)	%Depth	Measured Depth (m)	Warnings
1	1:13 PM	0.305	0.6	0.183	0.6000	0.110	Velocity Angle > QC
2	1:15 PM	0.488	0.6	0.335	0.6000	0.201	Velocity Angle > QC
3	1:17 PM	0.671	0.6	0.445	0.6000	0.267	Velocity Angle > QC
5	1:21 PM	1.036	0.2/0.6/0.8	0.585	0.2000	0.117	Velocity Angle > QC
5	1:21 PM	1.036	0.2/0.6/0.8	0.585	0.6000	0.351	Velocity Angle > QC
5	1:21 PM	1.036	0.2/0.6/0.8	0.585	0.8000	0.468	Velocity Angle > QC
6	1:25 PM	1.219	0.2/0.6/0.8	0.704	0.2000	0.141	Velocity Angle > QC
6	1:25 PM	1.219	0.2/0.6/0.8	0.704	0.6000	0.422	Velocity Angle > QC
6	1:25 PM	1.219	0.2/0.6/0.8	0.704	0.8000	0.563	Velocity Angle > QC
7	1:29 PM	1.402	0.2/0.6/0.8	0.786	0.2000	0.157	Low SNR,Beam SNRs Not Similar,SNR Threshold Variation,Velocity Angle > QC
7	1:29 PM	1.402	0.2/0.6/0.8	0.786	0.6000	0.472	Low SNR,Beam SNRs Not Similar,SNR Threshold Variation,Velocity Angle > QC
7	1:29 PM	1.402	0.2/0.6/0.8	0.786	0.8000	0.629	Low SNR,Beam SNRs Not Similar,SNR Threshold Variation,Velocity Angle > QC
8	1:33 PM	1.585	0.2/0.6/0.8	0.768	0.2000	0.154	Velocity Angle > QC
8	1:33 PM	1.585	0.2/0.6/0.8	0.768	0.6000	0.461	Velocity Angle > QC
8	1:33 PM	1.585	0.2/0.6/0.8	0.768	0.8000	0.614	Velocity Angle > QC
15	1:56 PM	2.865	0.2/0.8	0.823	0.2000	0.165	Boundary Interference
15	1:56 PM	2.865	0.2/0.8	0.823	0.8000	0.658	Boundary Interference
16	1:59 PM	3.048	0.2/0.8	0.829	0.2000	0.166	Approaching Low SNR,Beam SNRs Not Similar,Large SNR Variation,SNR Threshold Variation,High % Spikes
16	1:59 PM	3.048	0.2/0.8	0.829	0.8000	0.663	Approaching Low SNR,Beam SNRs Not Similar,Large SNR Variation,SNR Threshold Variation,High % Spikes
24	2:24 PM	4.511	0.2/0.6/0.8	0.546	0.2000	0.109	Large SNR Variation,SNR Threshold Variation,Velocity Angle > QC
24	2:24 PM	4.511	0.2/0.6/0.8	0.546	0.6000	0.327	Large SNR Variation,SNR Threshold Variation,Velocity Angle > QC
24	2:24 PM	4.511	0.2/0.6/0.8	0.546	0.8000	0.436	Large SNR Variation,SNR Threshold Variation,Velocity Angle > QC
25	2:28 PM	4.694	0.6	0.424	0.6000	0.254	Velocity Angle > QC
26	2:30 PM	4.877	0.6	0.369	0.6000	0.221	SNR Threshold Variation
27	2:31 PM	5.060	0.6	0.247	0.6000	0.148	SNR Threshold Variation,Velocity Angle > QC
28	2:33 PM	5.273	None	0.000	0.0000	0.000	Water Depth > QC



Discharge Measurement Summary

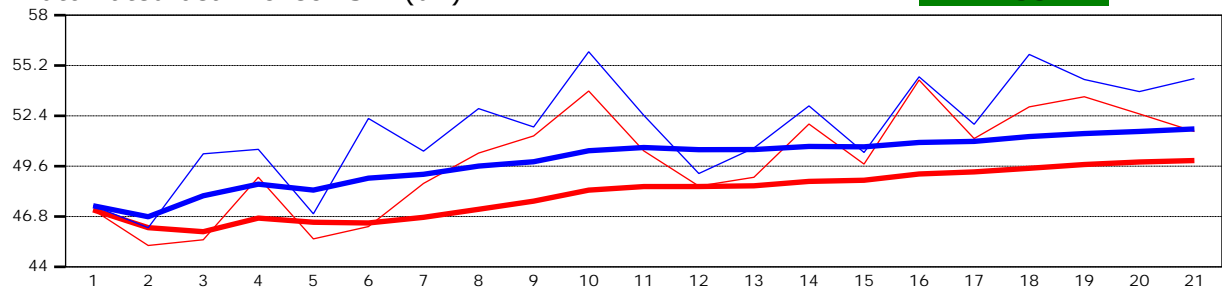
Site name WCanal6
Site number 002
Operator(s) VAllen
File name WestCanal_20230601_1311.ft
Comment

Beam 1	
Beam 2	

Automated beam check Start time 6/1/2023 1:10:18 PM

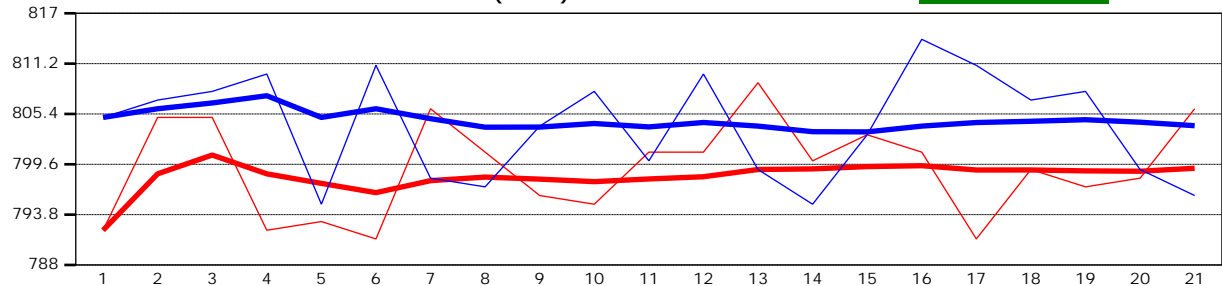
Automated beam check SNR(dB)

PASS



Automated beam check Noise level(cnts)

PASS



Automated beam check Quality control warnings

No quality control warnings



Discharge Measurement Summary

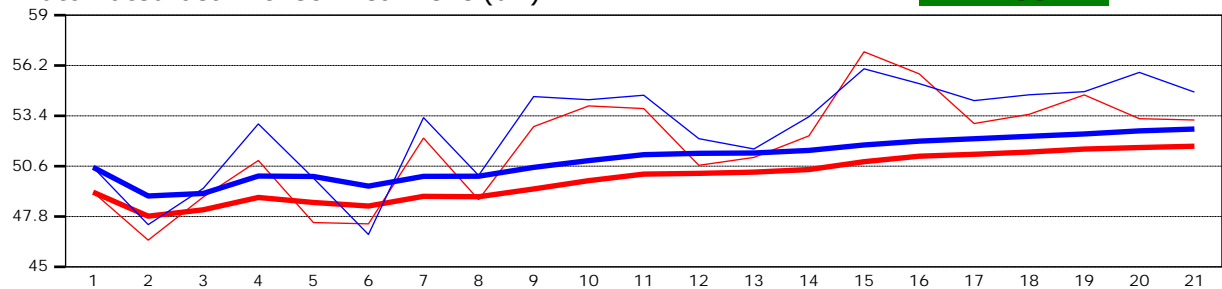
Site name WCanal6
Site number 002
Operator(s) VAllen
File name WestCanal_20230601_1311.ft
Comment

Beam 1	
Beam 2	

Automated beam check Start time 6/1/2023 1:10:18 PM

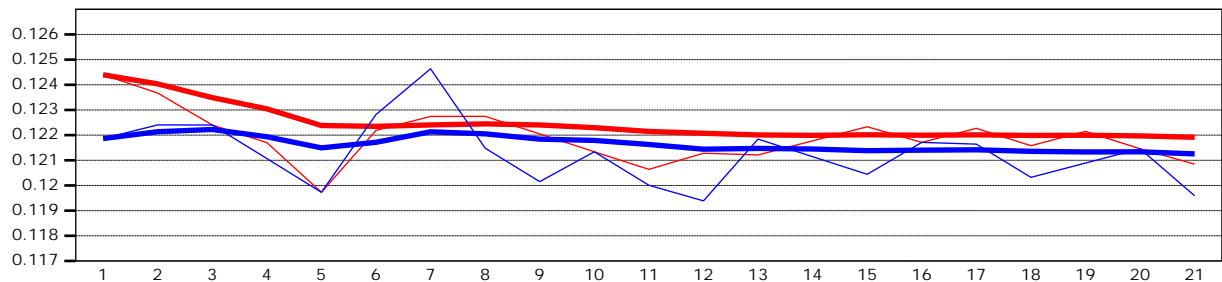
Automated beam check Peak level(dB)

PASS



Automated beam check Peak position(m)

PASS



Automated beam check Quality control warnings

No quality control warnings